

A photograph of two young children, likely from a developing country, standing in a grassy field. The child on the left is wearing a red and white patterned shirt and is holding a large, dark, rectangular plastic jerrycan on their head. The child on the right is wearing a blue shirt and is holding a large, yellow, rectangular plastic jerrycan on their head. Both children are looking towards the camera. The background is a blurred green field with some trees in the distance.

NCMI 2011 Annual Report

Mission Statement

NCMI equips the faith community, mobilizing public and private resources to eliminate poverty and its root causes.

Board of Directors

Dr. Richard Schubert, Chairman
Mr. James Purcell, Vice-Chairman
Dr. Gary Morsch, Secretary
Dr. Tom Nees
Dr. Louie Bustle
Mr. Larry Bollinger
Mrs. Melinda S. Holsopple
Dr. Errol Bolden
Dr. JoeAnn Ballard
Dr. Gustavo Crocker
Rev. Althea Taylor
Dr. Jess Middendorf
Dr. Bob Broadbooks



In October 2011, Dr. Schubert was honored for his Outstanding Leadership and Commitment to NCMI for 21 years as the Chairman of the Board of Directors. Right: Dr. Jess Middendorf, General Superintendent of the International Church of the Nazarene and member of the NCMI Board of Directors presents Dr. Schubert with the recognition award.

Letter from the Chairman

Dear NCMI Donors,

Twenty-One years ago I had the great honor of becoming the Chairman of the Board of Directors for NCMI. I am amazed how fast the time has gone by. We have gone through many transitions as we continue to pursue our mission to provide resources for global compassionate and development projects of Nazarene Compassionate Ministries. Effective March 1, 2012, I hand over the chair position to Dr. Gary Morsch. I extend my appreciation for Gary's continued service to NCMI in this new role. He will lead an engaged board of directors that will effectively evaluate the organization's leadership, manage the budget, and protect its mission and core values that govern NCMI. I can assure you that the organization is in good hands and that the board members volunteer their time as an expression of their personal faith commitment to bring an end to human suffering resulting from global poverty.

Grace and Peace,

Richard F. Schubert



The Kenya Youth Empowerment and Employment Initiative celebrated its first birthday July 2011.

Several successes, challenges, and new directions were part of the first year.

There were several successful events in July including the launch of the empowerMENetwork, a value addition training with an agricultural youth group: Janibichi, and also preparations for SlumFest, an annual event organized by the Slumcode group in Huruma.

Go to kenyayouth.org to read more about what Kenyan youth have been doing over the last year and a vision for where they are going.

Income	
Cash	
Donations	3,772,958
Gifts-In-Kind	
Donations	3,657,868
Other Income	<u>\$43,644</u>
Total Income	\$7,474,470

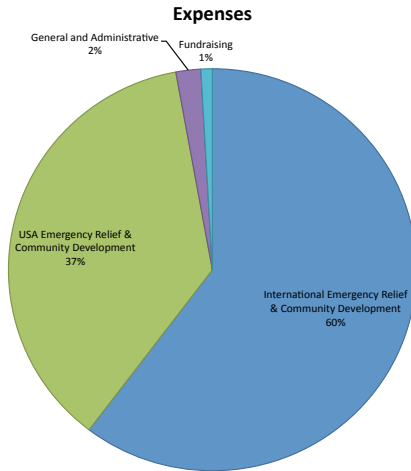
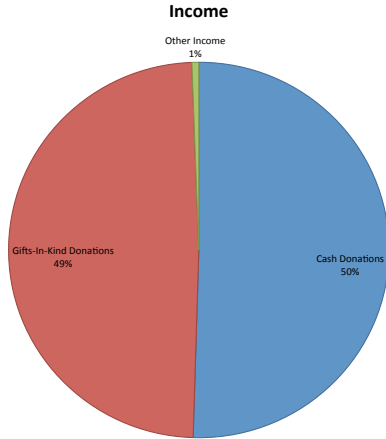
Expenses	
International	
Emergency	
Relief & Community	
Development	4,718,478

USA Emergency	
Relief &	
Community	
Development	<u>2,877,364</u>

General and	
Administrative	153,766
Fundraising	<u>\$70,924</u>
Total Expenses	\$7,820,532



Net Assets 12/31/2010 \$962,485
 Fundraising & Administration 3%



Workplace Giving

Federal Government Employees

NCMI participates in the Combined Federal Campaign (CFC) through a federation membership with Christian Service Charities (CSC). NCMI can be found in the CFC directory listed as Nazarene Compassionate Ministries, Inc. with the CFC code number 11735 .

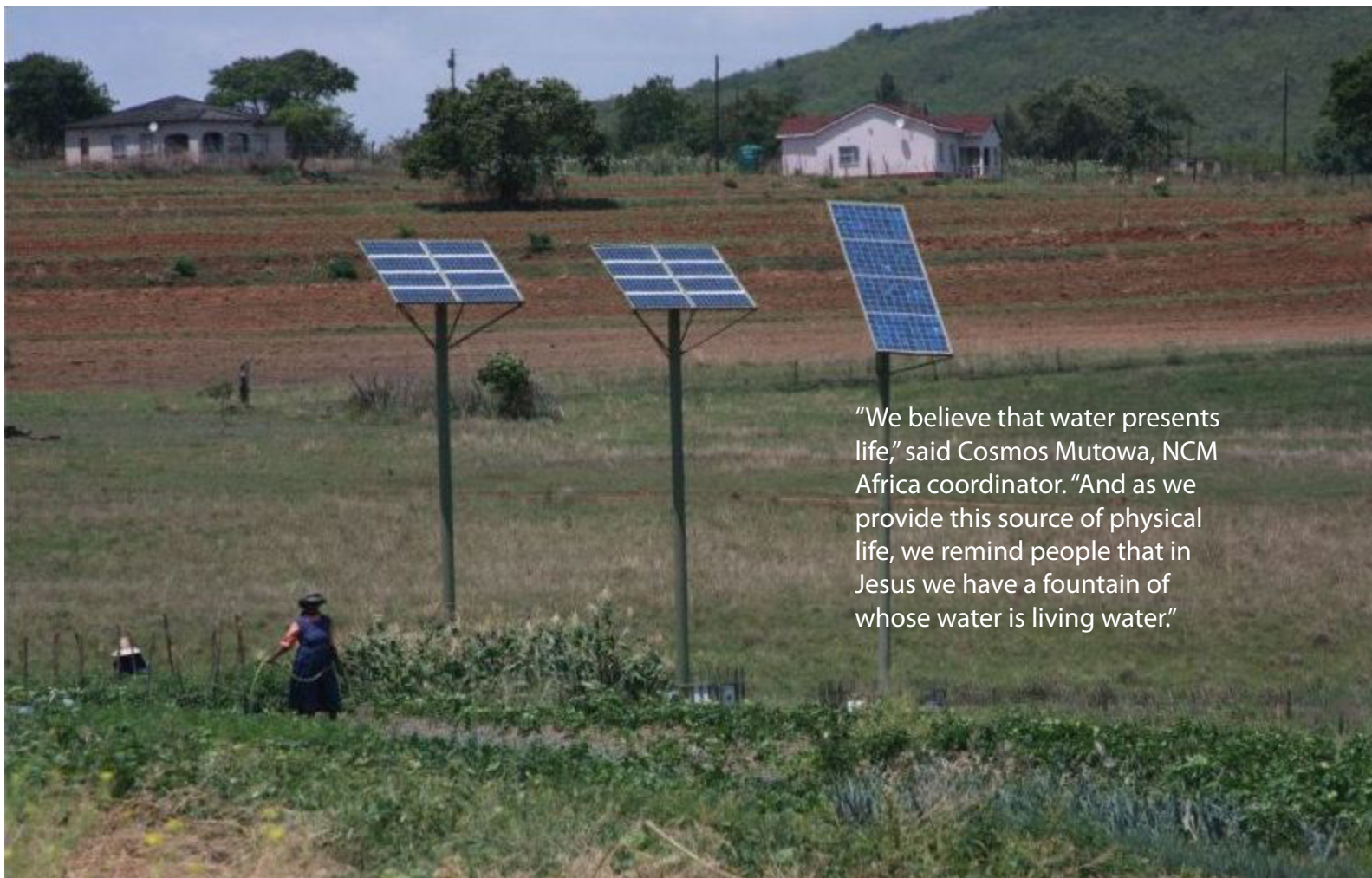
State and Local Government Employees

NCMI participates in State and Local giving campaigns through a membership with Neighbor To Nation. NCMI can be found alphabetically in the charity guide under Nazarene Compassionate Ministries, Inc. Ask your Human Resources Director or the benefits person for the code number for NCMI. In some cases you can just write our information on your pledge form. Please check with your employer for the correct process.

Non-government employees

United Way fall campaigns may be provided by non-government organizations. If you are a non-government employee, ask your Human Resources Director or the benefits person if your company will be hosting a United Way event. You are able to contribute using payroll deduction via United Way fall campaigns by writing on your donor choice card "NCMI, 17001 Prairie Star Parkway, Suite 100, Lenexa, KS, 66220, 800.214.4999."





"We believe that water presents life," said Cosmos Mutowa, NCM Africa coordinator. "And as we provide this source of physical life, we remind people that in Jesus we have a fountain of whose water is living water."

Water Interrupts the Cycle of Poverty

Dr. Beauty Makhubela, NCM country coordinator for Swaziland, knows that water is one of the most critical issues in a country where 70 percent of the people live in a rural setting with little access to water.

Through a grant from the Coca-Cola Africa Foundation, NCM's Water for a Generation project, which began in 2009, is placing solar water wells in 50 Swaziland communities over three years.

In addition to providing wells and cisterns, NCM Haiti is partnering with Pure Water for the World to provide biosand filters at 120 Nazarene schools and implement a hygiene education program at those schools. This will provide clean-water resources for an estimated 30,000 children and their families, as well as thousands more who live in those communities.

It will also provide a way to teach children (who will then teach their families) about things like washing hands that will add to the clean-water effort of reducing disease. These wells interrupt the cycle of poverty in the communities they service.

Healing Waters

Access to water affects health in more ways than one.

Whenever possible, the wells are connected to other ministries, such as schools, gardens, child development ministries, local churches, or support groups for those living with HIV and AIDS or epilepsy.

People's health has been better since the wells have introduced clean water into the communities. Among the greatest changes is a marked improvement in infection and disease control.

Because of its increased capacity to deliver quality care, the Swaziland clinics are now central hubs for getting HIV and tuberculosis treatment to rural communities. And entire communities are transformed as churches in Haiti become places where people come for both the literal and spiritual water of life.



*Challenged by Faith
to End Poverty*

Nazarene Compassionate Ministries, Inc.

17001 Prairie Star Parkway, Suite 100, Lenexa, KS 66220

Phone: 913-768-4808

Toll Free: 800-214-4999

Fax: 913-768-7752

E-mail: ncmi@ncmi.org

www.ncmi.org